

architectural and urban ergonomics

Division of Global Architecture, Course of Architectural Engineering

We have carried out our research aimed at the planning methods to design architecture, urban facilities and social system with considering human being. Our research key word "ergonomics" means not only human behaviors but also humans' evaluations and feelings, relationship between humans and so on. Our survey targets' building types are various, such as residential area, house, community facility, office, public urban space and so on.

Ergonomics

- Characteristics of perception and behavior
- Disaster prevention planning
- Universal design for buildings and urban spaces

Housing Management

- Facilitation of housing management and distribution
- Supporting entities (eg. Builders, NPOs, Communities)
- Information about housing and district

Suburban Residential Area

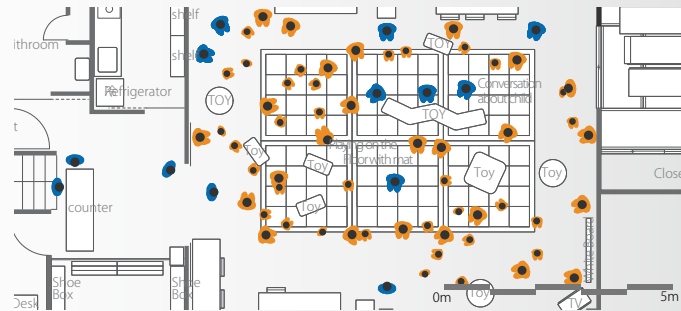
- Sustainability of Suburban Housing Area
- Living environment for Child-rearing generation
- Residents' transition and residence selection

Regional Facilities' Planning

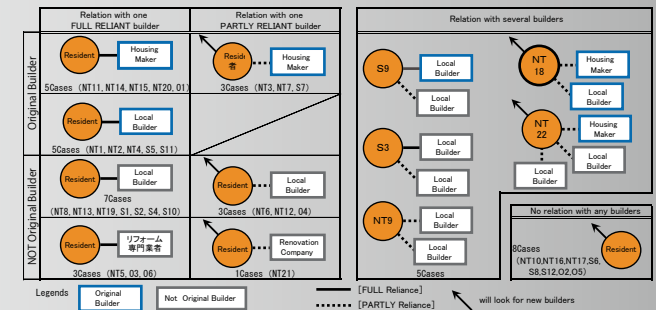
- Location and improvement method
- Area re-vitalization with regional resource
- Planning of university campus

Urban and Spatial Analysis

- Occurrence and factors of low-density areas
- Compact City conversion methodology
- Cooperation between multiple adjacent regions



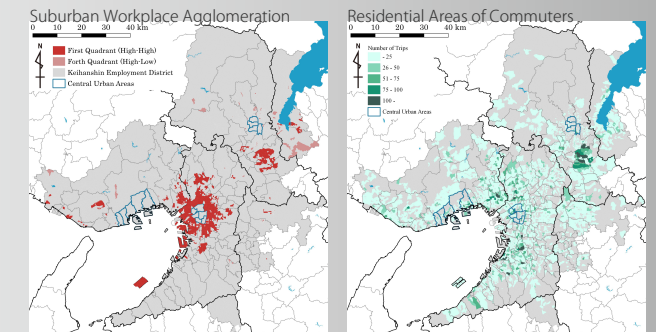
Human Behavior in Assembly Facilities



Relation between Residents and Builder in Housing Maintenance



Generation of Community Facilities



Spatial Distribution of Workplaces and Residential Areas

Staff

Professor: Takashi YOKOTA
 yokota@arch.eng.osaka-u.ac.jp tel. 06-6879-7647

Associate Professor: Emiko ITAMI
 itami_emiko@arch.eng.osaka-u.ac.jp tel. 06-6879-7648

Assistant Professor: Takashi AOKI
 aoki_takashi@arch.eng.osaka-u.ac.jp tel. 06-6879-7649

Web Site

<http://www.arch.eng.osaka-u.ac.jp/~labo5/>